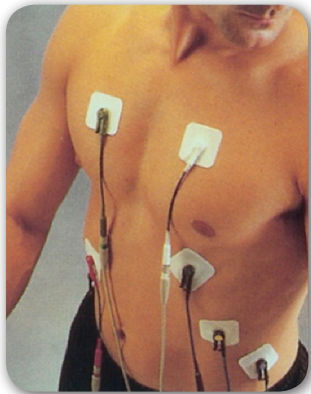
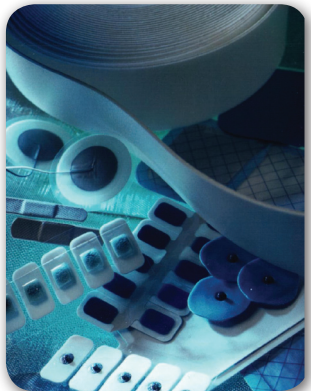


Berry Plastics' Specialty Tape Group is the name behind many of the OEM, hospital and retail health care tape products you use and trust every day. Our extensive and innovative selection of core products are designed to withstand EtO and gamma sterilization as well as the rigors of patient care with minimal affect due to fluid exposure, radical changes in temperature or mechanical stress. We combine technical expertise with design and manufacturing resources to ensure our ability to produce a solution to meet your application needs.



STG offers an exceptional variety of medical foam tapes to suit the needs of almost any application. Foam tapes are soft and flexible for maximum patient comfort, conformable and easily adaptable to medical devices and body contours, and are easily die-cut into various sizes and shapes. With a broad range of thickness, adhesive, and release liner options, our core foam tape offering includes products suitable for:

- **Electrodes (EKG, ECG, TENS, etc)**
- **AED Defibrillator Pads**
- **Medical Device Mounting**
- **Medical Device Assembly**
- **Transdermal Delivery Systems**
- **and More!**



STG's medical foam tapes are designed with both the converter and the patient in mind to ensure maximum processibility and maximum performance in medical situations where it matters most.

**More than Adhesives... Answers<sup>™</sup>**

# STG Medical Foam Tapes

Part Number	Adhesive Description	Liner Description	Adhesive Thickness (mils / mm)	Liner Thickness (mils / mm)	Adhesion (oz/in / N/25mm)	Liner Release (g/in / N/25mm)	Bio-compatibility Testing	FEATURES
<b>1/16" White, XL PE Foam Carrier</b>								
2108G	Non-irritating acrylic	2 mil CL PET	0.8 (0.02)	2.0 (0.051)	82 (23)	25 (0.25)	C, I	Excellent lay-flat and dimensionally-stable release liner. Good balance of adhesion, tack, and shear performance.
2916B	Non-sensitizing acrylic	96# BL KFT	1.6 (0.041)	6.8 (0.173)	110 (31)	60 (0.59)	C, I, S, LR	General purpose adhesive for short term wear and removal without trauma. Stable to EtO and gamma sterilization.
2916P	Non-sensitizing acrylic	96# BL KFT	2.0 (0.051)	6.8 (0.173)	100 (28)	70 (0.69)	C, I, S	General purpose adhesive with good adhesion to skin and medical devices for short to medium term wear applications. PSA is gamma and EtO stable.
3493T	Non-sensitizing acrylic	74# BL KFT	1.5 (0.038)	5.6 (0.142)	100 (28)	60 (0.59)	C, I, S	General purpose adhesive with good adhesion to skin and medical devices for short to medium term wear applications. PSA is gamma and EtO stable.
3493V	Non-sensitizing acrylic	74# BL KFT	2.0 (0.051)	5.6 (0.142)	110 (31)	75 (0.74)	C, I, S	Higher adhesive coat weight version of 3493T. The higher coat weight offers higher adhesion for more demanding and longer term wear applications.
3493Y	Non-sensitizing acrylic	96# BL KFT	2.0 (0.051)	6.8 (0.173)	110 (31)	7 (0.07)	C, I, S	Similar to 3493V with an extremely low liner release for converting applications that require easy removal of the liner.
3355U	Highly moisture-resistant, extended wear acrylic	96# BL KFT	2.0 (0.051)	6.8 (0.173)	60 (17)	25 (0.25)	C, I, S	Aggressive adhesive designed for applications requiring sustained periods on skin and removal without trauma. Adhesive is highly resistant to perspiration-borne moisture and water.
<b>1/32" White, XL PE Foam</b>								
2932J	Non-sensitizing acrylic	96# BL KFT	2.2 (0.056)	6.8 (0.173)	90 (25)	55 (0.54)	C, I, S, LR	General purpose adhesive for short term wear and removal without trauma. Stable to EtO and gamma sterilization.
2932O	Non-sensitizing acrylic	40 # SB SCK	2.0 (0.051)	2.5 (0.064)	100 (28)	15 (0.15)	C, I, S	General purpose adhesive with good adhesion to skin and medical devices for short to medium term wear applications. PSA is gamma and EtO stable. Offered on an economy grade liner, which is lower basis weight, non polycoated kraft.
2932P	Non-sensitizing acrylic	96# BL KFT	2.0 (0.051)	6.8 (0.173)	90 (25)	65 (0.64)	C, I, S	Similar to 2932O with a polycoated release liner for added moisture resistance, lay flatness, and improved convertibility.
3355G	Highly moisture-resistant, extended wear acrylic	96# BL KFT	2.0 (0.051)	6.8 (0.173)	60 (17)	40 (0.39)	C, I, S	Aggressive adhesive designed for applications requiring sustained periods on skin and removal without trauma. Adhesive is highly resistant to perspiration-borne moisture and water.
3355H	Highly moisture-resistant, extended wear acrylic	96# BL KFT	3.0 (0.076)	6.8 (0.173)	80 (22)	45 (0.44)	C, I, S	Similar to 3355G, higher coat weight offers higher adhesion for more demanding and longer term wear applications.
<b>20mil White, XL PE Foam</b>								
3543A	Non-sensitizing acrylic	60# SCK	5.0 (0.127)	3.5 (0.089)	90 (25)	25 (0.25)	C, I, S	Aggressive adhesive designed for long term wear applications requiring a very high adhesion and oil migration resistance.

C = Cytotoxicity, I = Irritation, S = Sensitization, LR = Limited Repeat Insult Patch Testing

Engineered Materials Division Headquarters  
25 Forge Parkway  
Franklin, MA 02038

Ph: 1-800-248-7659

Fax: 1-800-328-4822

<http://tapes.berryplastics.com>